

Achieving health equity to end the neglect of poverty related diseases

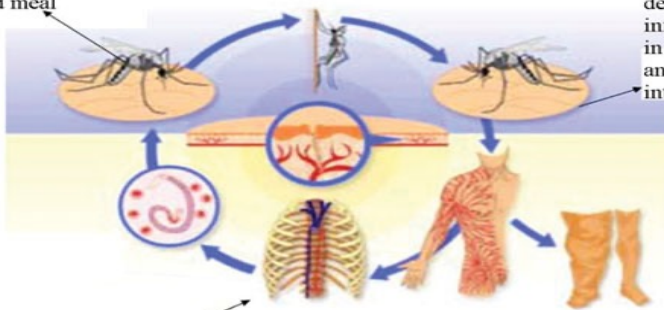
Lymphatic filariasis (Elephantiasis)

- Parasitic infection caused by *Wuchereria bancrofti*
- Affecting lymphatic vessels
- Leads to abnormal enlargement of lymph nodes, lower limbs and genitalia



(a) Microfilaria from an infected person enter the mosquito in a blood meal

(b) Microfilaria develop into infective larvae in the mosquito and are injected into a new host



(c) Larvae mature into adult worms and spread through the lymphatic vessels, where they mate and lay eggs

(Source: WHO at http://www.who.int/lymphatic_filariasis/en/)

Symptoms

- Fever and skin rash
- Painful testis
- Body pain
- Lymph node swelling
- Swelling of lower limbs and genitalia

Prevention

- Eliminate mosquito breeding grounds
- Use mosquito repellent and mosquito nets

Consult your doctor immediately if you have any of the symptoms